

# DUO

Smart Peephole DoorCam  
App Setup

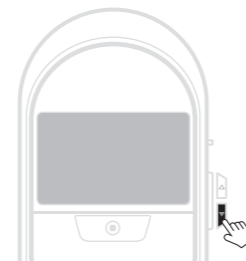
## Install Brinno DUO App

Smartphone OS : Android 4.4 / iOS 8.0 or later  
Scan for Brinno DUO App to Set Up Your Device.

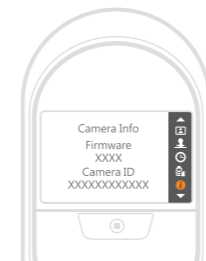


www.brinno.com/shc1000w/app

## Camera ID Info



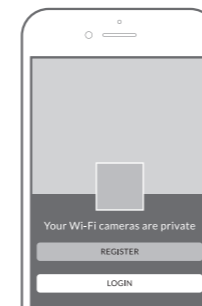
1. Press **DOWN** button to enter "MENU SETTINGS".



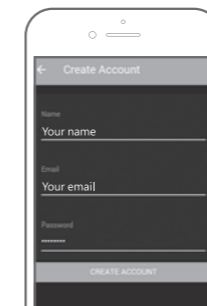
2. Go to "Camera Info" option. Copy down the camera ID (combo of 12 digits & uppercase letters) for the setup of camera Wi-Fi connection.

## Create Account & Login

1. Open "Brinno DUO" app.



2. Tap [ REGISTER ] to create your account.



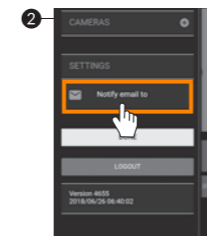
3. Input account info, tap [ CREATE ACCOUNT ] to continue.

## Add Camera

1. Tap [ Setting ] icon.

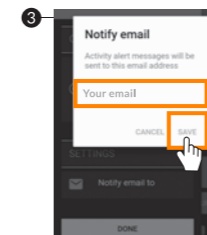


2. Tap [ Notify email to ].

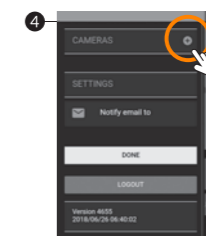


3. Input email account to get notifications and press [ SAVE ]

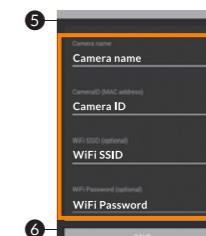
▲ We **STRONGLY RECOMMEND** that you **CREATE A NEW DEVOTED EMAIL ACCOUNT** in reputable free email platform to assure easy access by users you authorize & no worry about storage space & privacy.



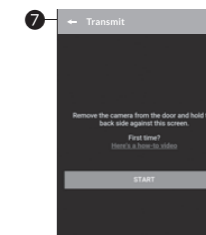
4. Tap [ Add ] icon to add cameras.



5. Name your camera. Type in "Camera name" along with the "Camera ID", "Wi-Fi SSID" and "Wi-Fi Password".



6. Tap [ ADD CAMERA ].



7. Stay on "Transmit" screen. App is ready for Wi-Fi connection.

## Get Ready for Wi-Fi Connection

1. Restart camera.



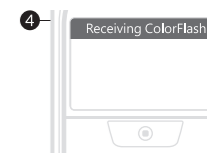
2. Hold **SHUTTER** button on the camera until the Brinno logo appears on the LCD screen.



3. On "Select Wi-Fi" screen, select "Other (from phone app)" and press **SHUTTER** button.



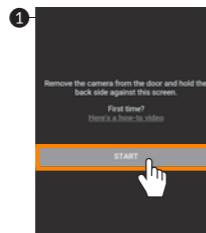
4. Go to "Receiving ColorFlash" screen for Wi-Fi connection.





## Start Wi-Fi Connection

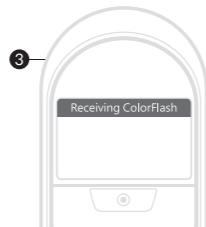
1. On App, press [ **START** ] to get ColorFlash to connect.



2. Place the camera onto the smartphone screen.



3. Receive ColorFlash for connection (it takes 1 min to complete).



4. Once the flashing stops, the LCD screen will display the keyed in Wi-Fi SSID & password. Press **SHUTTER** button to continue.

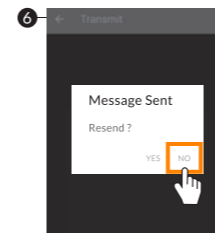


5. Press **DOWN** button to go to menu "Wi-Fi Status" to check connection status. Once connected, the ping # will keep on counting.



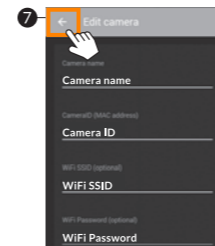
▲ If the ping # stops counting or the LCD displays "No Wi-Fi Access Point", re-start the camera then re-do the "Get Ready for Wi-Fi Connection" & "Start Wi-Fi Connection" process.

6. The app screen displays "Message Sent" info, tap [ **NO** ] to continue.

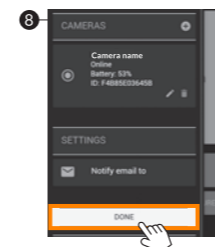


▲ If the Wi-Fi cannot connect, tap [ **YES** ] to re-start the ColorFlash process.

7. Tap [ **Back** ] icon.



8. Tap [ **DONE** ] to complete camera Wi-Fi connection setup.



## Live View

1. Tap [ **LIVE VIEW** ] to start live streaming.



2. Tap [ **PAUSE** ] to stop live streaming.



## Capture

Tap [ **CAPTURE** ] to capture images.



## Replay

1. Tap [ **FILES** ] to go to SD card file list.

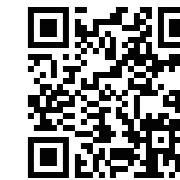


2. Replay captured images from list.

3. Tap [ **Back** ] icon to return to file list. Tap it again to return to home screen.

## Online App Setup Guide

Learn how to set up the app:



[www.brinno.com/shc1000w/app-setup](http://www.brinno.com/shc1000w/app-setup)